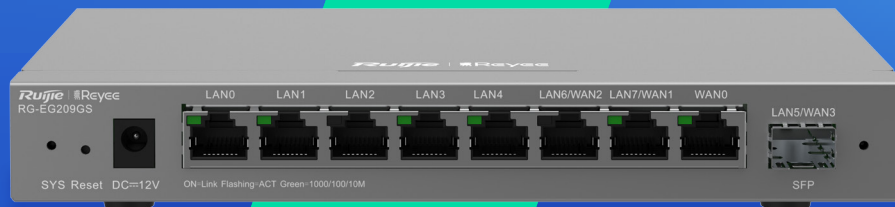


RG-EG209GS

Reyee 9-Port Gigabit SFP Cloud Managed Router

DATASHEET



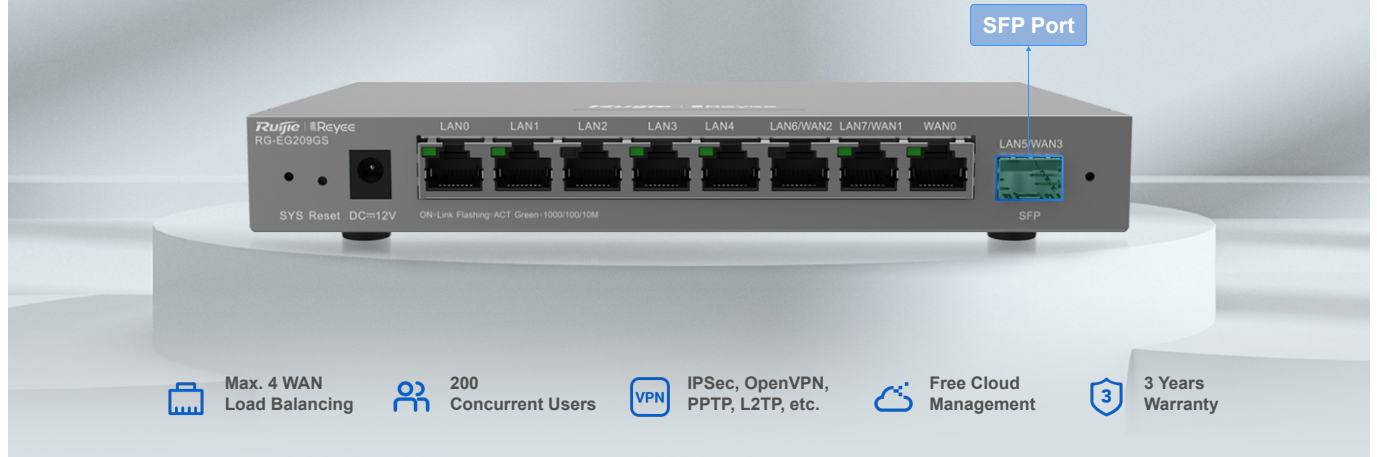
Highlights

- LAN/WAN switchable SFP port for adding optical fiber connectivity
- User friendly configuration, easy to learn
- Intelligent load balancing and link redundancy between multiple WAN ports
- New efficient way of bandwidth management based on application and user
- Customize portal page, what you see is what you get

Highlight Features

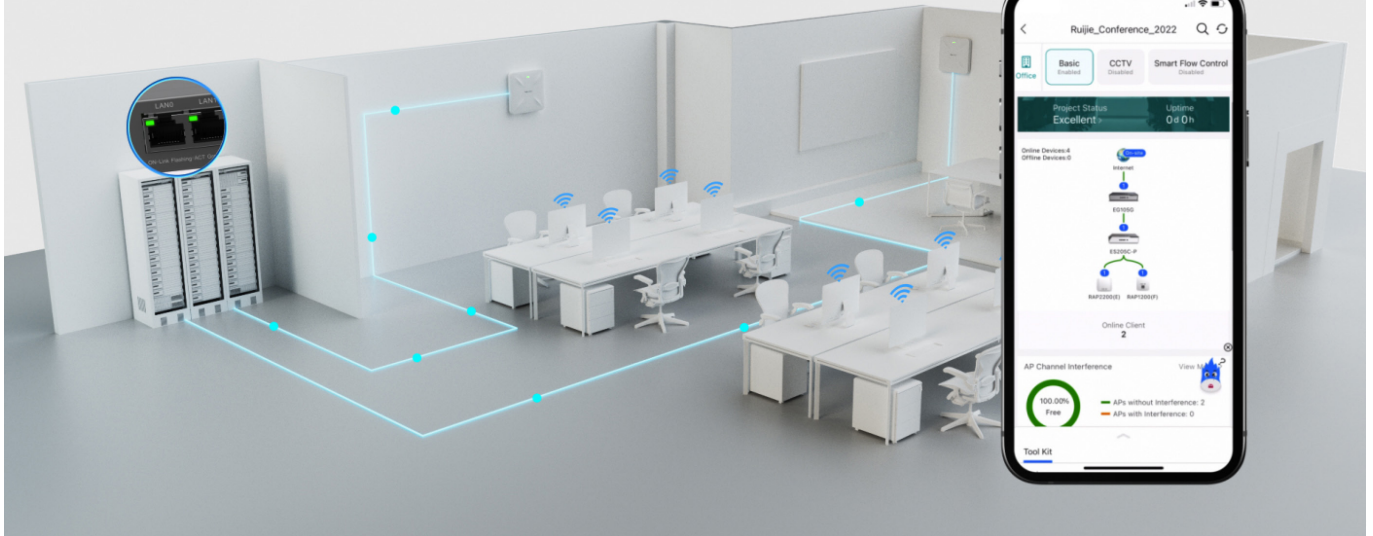
Simplified and Powerful

LAN/WAN switchable SFP port for adding optical fiber connectivity.



User Friendly Configuration, Easy to Learn

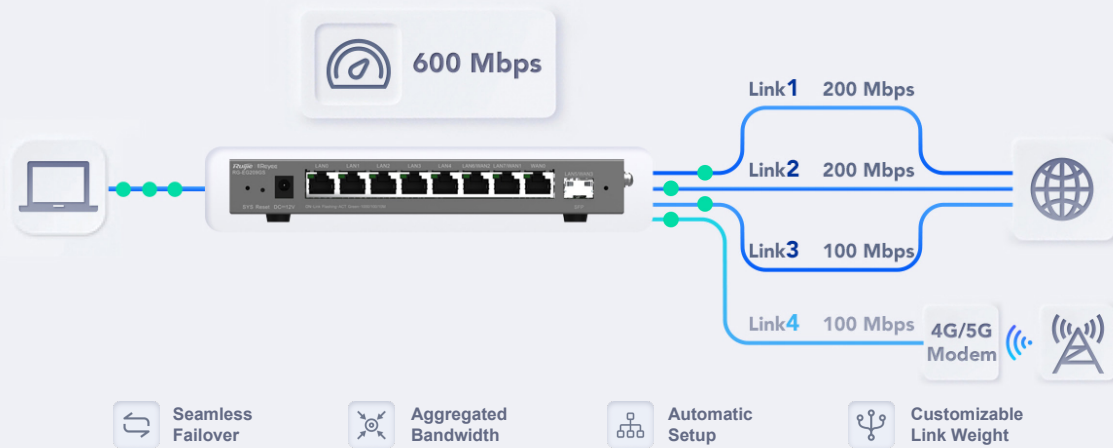
Even for advanced functions, set-up can be easily done by Ruijie Cloud APP.



Highlight Features

Unbreakable Multi-WAN Internet

Intelligent load balancing and link redundancy between multiple WAN ports



New Efficient Way of Bandwidth Management

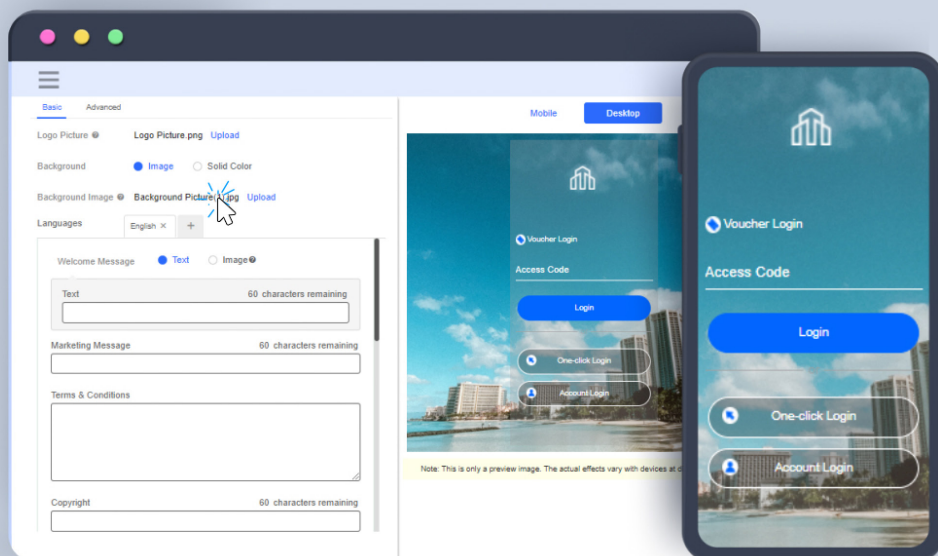
Application Based Bandwidth Management

	Video Conference High-priority 20 Mbps
	HD Video 5 Mbps
	Social Media 5 Mbps

User Based Bandwidth Management

	User Group Management 50 Mbps
	User Group Finance High-priority 30 Mbps
	User Group Other staff 100 Mbps

Customize Portal Page, What You See is What You Get



Highlight Features

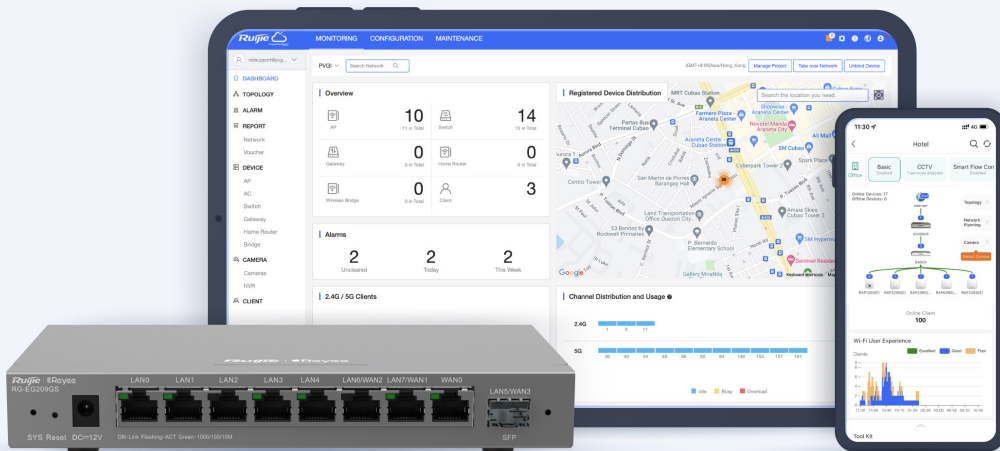
Secure Access Internal Device Remotely

No matter dynamic or even private IP on gateway WAN port,
Securely monitoring the NVR/IPC/Internal Server anytime from anywhere .



Cloud, Make Your Business Easy

- Self-organizing Network
- Centralized Network Management
- Scenario Based Configuration
- Cloud Portal Authentication
- Remote Monitoring and Maintenance



Specifications

Physical Basic

Fixed WAN Port	1×10/100/1000 Base-T
Fixed LAN Port(s)	7×10/100/1000 Base-T 1×1GBase-X SFP
LAN/WAN Switchable Port(s)	2×10/100/1000 Base-T 1×1GBase-X SFP
Performance	600Mbps (1518Byte,NAT+Flow Audit) 430 Mbps (1518Byte,NAT+Authentication, Application Identification, Flow Audit and Flow Control)
Throughput	600Mbps
Recommended Clients	200
Power Consumption	≤ 18W

Software Feature

Network Access Mode	PPPoE Client DHCP Client Static IP
Automatic Identification of Internet Type	✓
Avoidance of WAN IP Address Conflicts	✓
Learning PPPoE Account & Password	✓
VLAN	Support, 8
IPv6	✓
IPTV	✓
AC Mode	✓
Behavior Management	APP Block (Time/IP-based Policy) Website Filtering
Application Recognition	Identify 100+ Applications, including Office, IM, Web Page, Online Shopping, Online Gaming, P2P Download and Popular Videos
Application Priority	✓

Specifications

Software Feature	
Flow Control	Smart Flow Control Custom flow Control Policies IP-based Automatic Bandwidth Assignment
Traffic Audit	Real-time Traffic Audit
Diagnosis	✓
Marketing authentication	WiFiDog (SMS authentication and one-click authentication)
Local authentication	Portal Authentication Password Authentication QR Code Authentication
L2TP VPN	✓
PPTP VPN	✓
IPsec VPN	✓
OpenVPN	✓
No. of PPTP&L2TP&OpenVPN Account	100
Overall IPsec VPN Performance	28Mbps
Overall L2TP VPN Performance	190Mbps
Overall OPENVPN Performance	20Mbps
IPsec VPN Tunnels	8
OpenVPN Tunnels	16
L2TP VPN Tunnels	8
Static routing	✓
RIP/RIPng	✓
Policy-Based Routing (PBR)	✓
WAN Port Failover	✓

Specifications

Software Feature	
WAN Load Balancing	✓
Load balancing based on source address	✓
Flow-based Load Balancing	✓
Port-based weighted load balancing of data streams	✓
PPPoE Client	✓
PPPoE Server	✓
DHCP Server	✓
DNS Client	✓
DNS Server	✓
DNS Proxy	✓
NTP Client	✓
DDNS	Oray DDNS, DynDns, NO-IP, Ruijie DDNS
NAT	✓
NAPT	✓
NAT ALG	✓
Port Mapping	✓
UPnP	✓
MACC	✓
ACL	✓
Time-based ACLs	✓
Malicious Attacks Defense	✓
ARP binding	✓

Specifications

Software Feature	
Prevent Port Scan Attack	✓
Prevent Fragmentation Attack	✓
Prevent Teardrop Attack	✓
Prevent Ping of Death Attack	✓
Prevent Land Attack	✓
Prevent Smurf / Fraggle attack	✓
Prevent SYN Flood Attack	✓
Cloud Management	✓
APP Management	✓
APP Upgrade	✓
APP Restart	✓
Scheduled Restart	✓
Default Access/Password	192.168.110.1, No Password Required by Default
Local Upgrade	✓
Online Upgrade	✓
Backup	✓
Factory Reset	✓

Language

Chinese
 English
 Vietnamese
 Indonesian
 Thai
 Arabic
 Traditional Chinese
 Spanish
 Russian

Specifications

Hardware Feature

CPU	2 Cores, 880 MHz
SDRAM/RAM	256MB
Flash Memory	32MB SPI NOR FLASH
Power Supplies	DC 12V/1.5A
PoE Standard	NA
PoE Power Budget	NA
DC Port Dimensions	Outer Diameter: 5.5 mm Inner Diameter: 2.1 mm Length: 10 mm (Outer Diameter: 0.22 in. Inner Diameter: 0.08 in. Length: 0.39 in.)
Indicator	1 × System LED indicator
Buttons	1 × Reset button
Dimensions (W×D×H)	202 mm x 28 mm x 108 mm(7.9 5in. x 1.1 in. x 4.25 in.)
Weight	0.5kg (packages not included)
Installation	Desk-mounted
Rack Dimensions	NA
Dissipation Mode	Air-cooled Heat Dissipation
Airflow Direction	NA
Fan	Fansless
Operating Temperature	0°C to 40°C (32°F to 104°F)
Storage Temperature	-40°C to 70°C (-40°F to 158°F)
Operating Humidity	10% to 90% Noncondensing
Storage Humidity	5% to 90% Noncondensing
Port Surge	4 kV

Specifications

Hardware Feature	
IP(Ingress Protection)	IP20
Max Management of Reyee Switchs	128
Max Management of Reyee APs	150
No. of PPPoE Server Account	65

Package Contents

Device	RG-EG209GS
Device	1
Foot Pad	4
Power Adapter	1
User Manual	1
Warranty Card	1
Package Weight	1.1 kg
Package Dimension (w x d x h)	305 mm x 289 mm x 64 mm

Ruijie | 睿 Rcycc

 **Redefine your easy network**

Copyright ©2000-2022 Ruijie Networks Co., Ltd. All rights reserved.

No part of this document may be reproduced or transmitted in any form or any means without prior written consent of Ruijie Networks Co., Ltd.

Notice

This content is applicable only to regions outside the China mainland. Ruijie Networks Co., Ltd. reserves the right to interpret this content.

The information contained herein is subject to change without notice. Nothing herein should be construed as constituting an additional warranty. Ruijie Networks Co., Ltd. shall not be liable for technical or editorial errors or omissions contained herein.



Ruijie Networks Co., Ltd
Floor 11, East Wing, Zhongyipengao Plaza,
No.29 Fuxing Road, Haidian District, Beijing China
Website: <https://www.ruijienetworks.com>